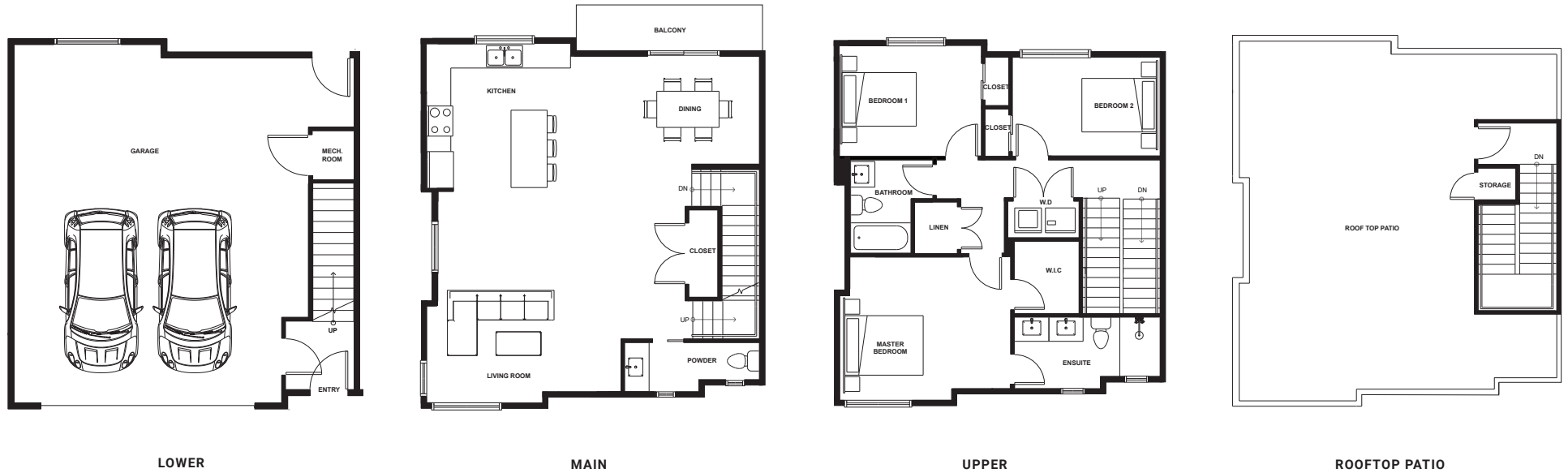


TOWNHOME PLAN B4 44

3 BEDROOM, 2.5 BATHROOM

1546 SF



LOWER

MAIN

UPPER

ROOFTOP PATIO



LOWER: 69 SF
MAIN: 740 SF
UPPER: 737 SF
TOTAL: 1546 SF

GARAGE: 581 SF

ROOFTOP PATIO: 627 SF
BALCONY: 57 SF
GRAND TOTAL: 2811 SF

The developer reserves the right to modify any information, design specifications and floorplans should they be necessary. Renderings, views and layouts are for illustration purposes only. This is not an offering for sale as an offering for sale can only be made by a disclosure statement. The developer reserves the right to make changes at any time.

Copyrights © 2023 Skyview. All rights reserved.