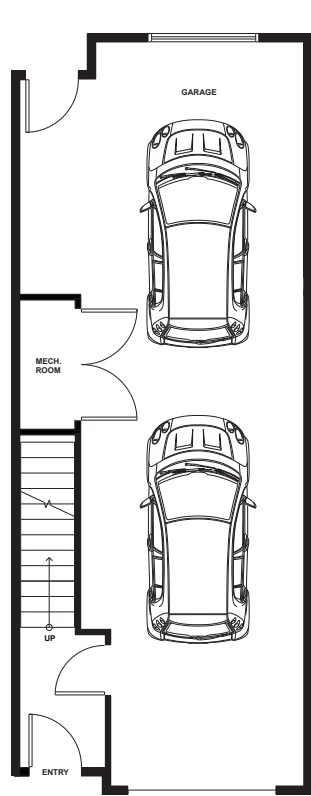


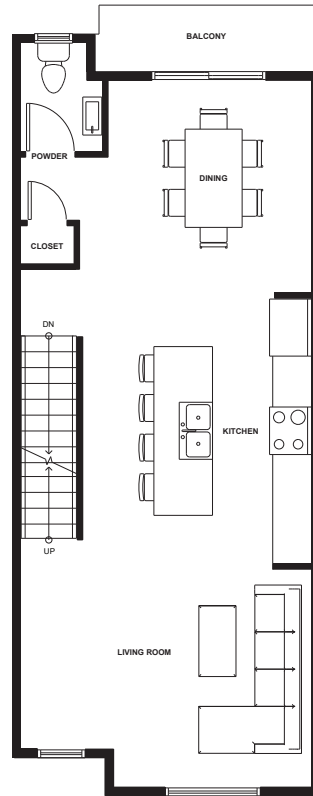
TOWNHOME PLAN B4 46

3 BEDROOM, 2.5 BATHROOM

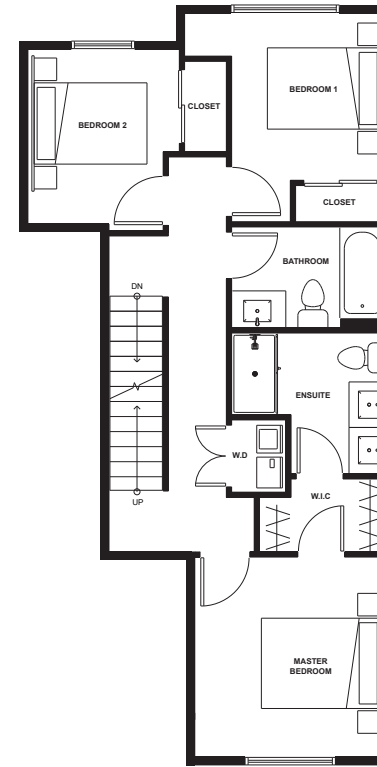
1242 SF



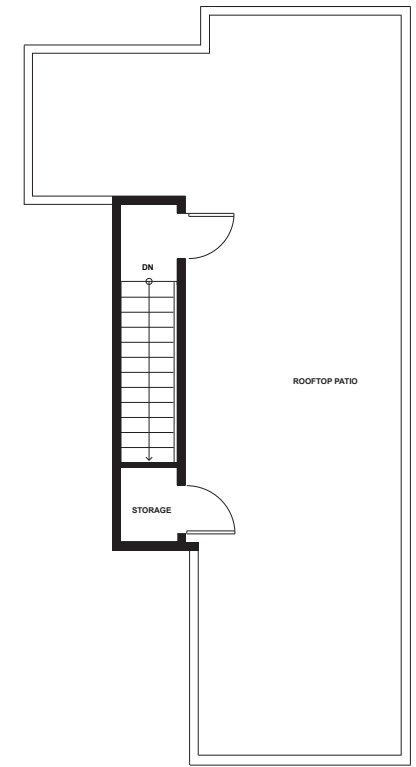
LOWER



MAIN



UPPER



ROOFTOP PATIO



LOWER: 84 SF
MAIN: 552 SF
UPPER: 606 SF
TOTAL: 1242 SF

GARAGE: 503 SF

ROOFTOP PATIO: 533 SF
BALCONY: 37 SF
GRAND TOTAL: 2315 SF

The developer reserves the right to modify any information, design specifications and floorplans should they be necessary. Renderings, views and layouts are for illustration purposes only. This is not an offering for sale as an offering for sale can only be made by a disclosure statement. The developer reserves the right to make changes at any time.

Copyrights © 2023 Skyview. All rights reserved.