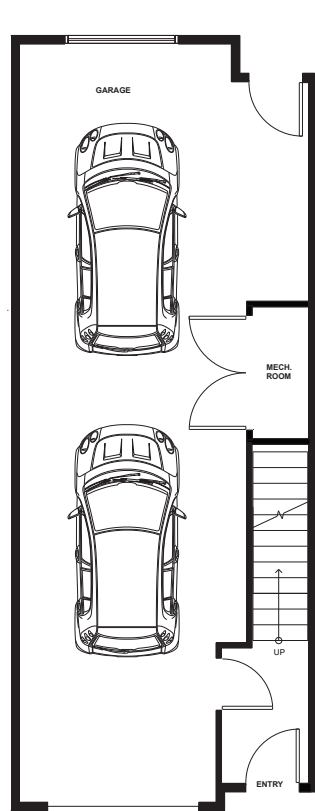


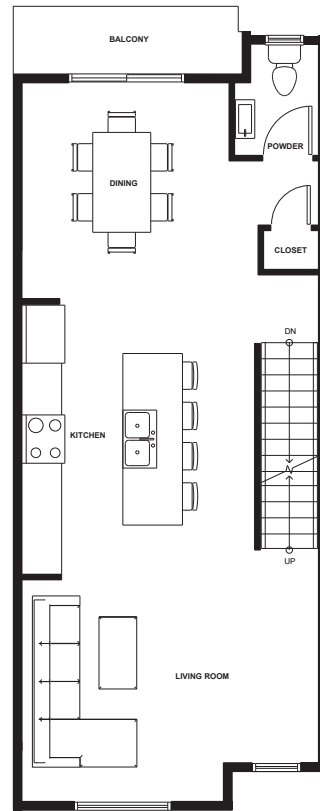
TOWNHOME PLAN B4 45

3 BEDROOM, 2.5 BATHROOM

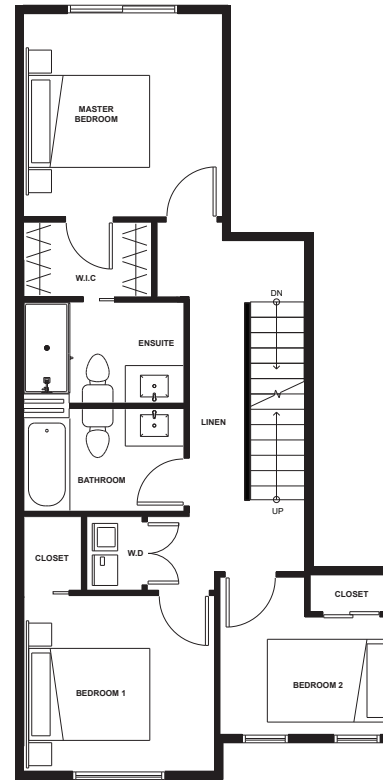
1238 SF



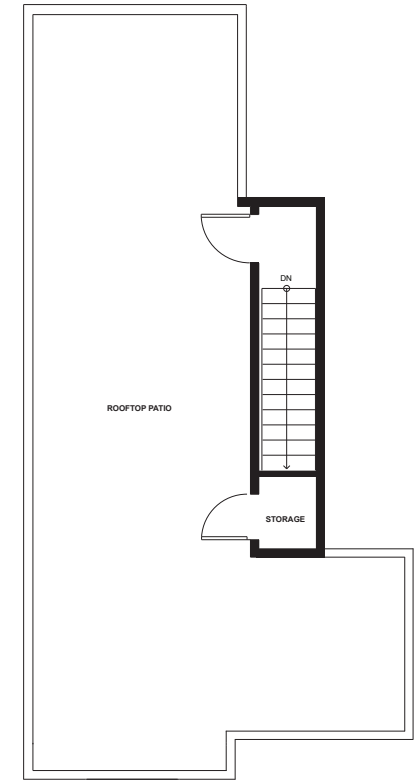
LOWER



MAIN



UPPER



ROOFTOP PATIO



LOWER: 85 SF
MAIN: 552 SF
UPPER: 601 SF
TOTAL: 1238 SF

GARAGE: 502 SF

ROOFTOP PATIO: 606 SF
BALCONY: 37 SF
GRAND TOTAL: 2383 SF

The developer reserves the right to modify any information, design specifications and floorplans should they be necessary. Renderings, views and layouts are for illustration purposes only. This is not an offering for sale as an offering for sale can only be made by a disclosure statement. The developer reserves the right to make changes at any time.

Copyrights © 2023 Skyview. All rights reserved.