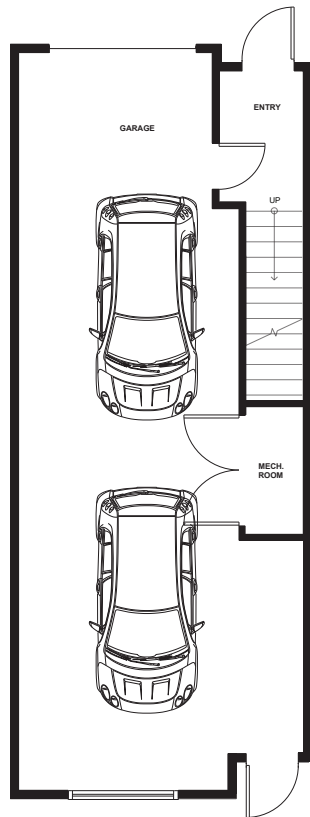


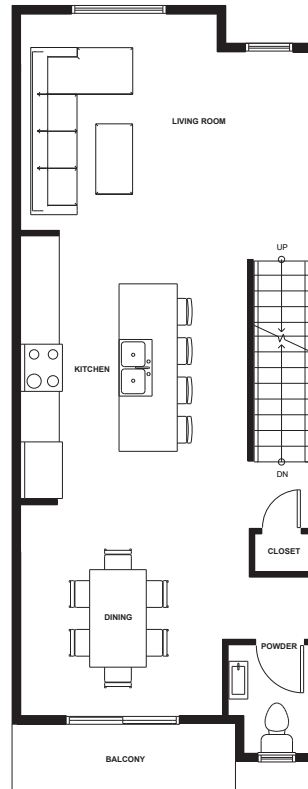
# TOWNHOME PLAN B1 10

3 BEDROOM, 2.5 BATHROOM

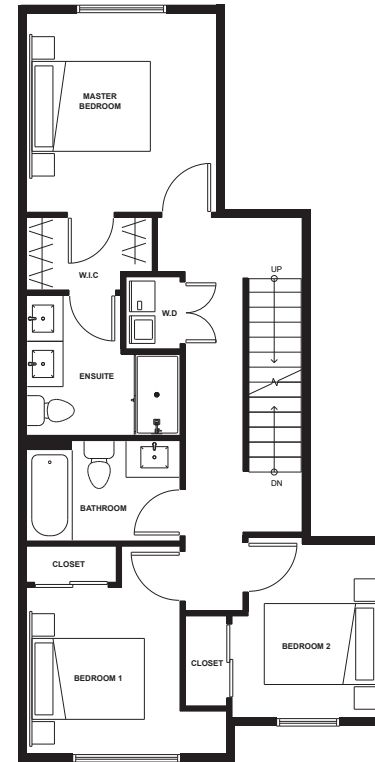
1226 SF



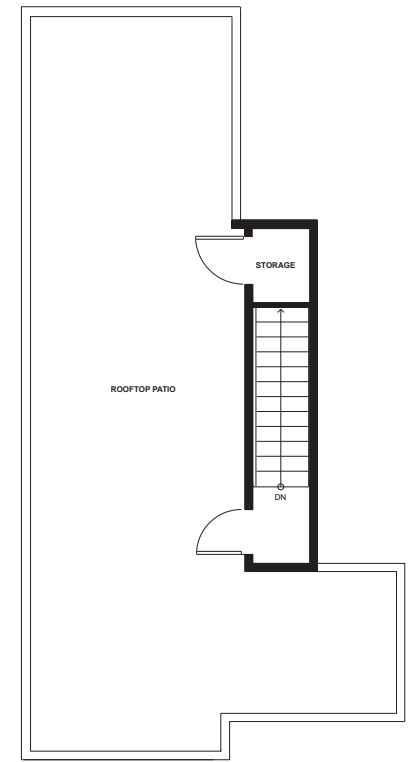
LOWER



MAIN



UPPER



ROOFTOP PATIO



LOWER: 84 SF  
MAIN: 537 SF  
UPPER: 605 SF  
**TOTAL: 1226 SF**

GARAGE: 503 SF

ROOFTOP PATIO: 532 SF  
BALCONY: 37 SF  
**GRAND TOTAL: 2298 SF**

The developer reserves the right to modify any information, design specifications and floorplans should they be necessary. Renderings, views and layouts are for illustration purposes only.  
This is not an offering for sale as an offering for sale can only be made by a disclosure statement. The developer reserves the right to make changes at any time.

Copyrights © 2023 Skyview. All rights reserved.